



**ALASKA DIVISION OF HOMELAND SECURITY &  
EMERGENCY MANAGEMENT**



**SITUATION REPORT 21-354 • DECEMBER 20, 2021**

Toll-Free 1.800.478.2337

Anchorage Area 907.428.7000

SEOC 907.428.7100

<p><b><u>SEOC Preparedness Level</u></b> Level 1 – Normal Operations</p>	<p><a href="http://ready.alaska.gov">http://ready.alaska.gov</a></p>	<p><b><u>National Terrorism Advisory System:</u></b> Read the updated NTAS Bulletin <a href="#">here</a></p>
<p><b><u>Maritime Security (MARSEC)</u></b> Level:1-Minimum Appropriate Security Measures</p>	<p><b>WHO Novel Coronavirus Pandemic (COVID-19):</b>  <a href="#">2019 Novel Coronavirus</a></p>	<p><b><u>Alaska Military Installation Force Protection Level:</u></b> FPCON Bravo</p>

(Significant changes from previous situation reports are in red.)

**Significant Issues:**

None

**Threat Level Changes:**

None

**State of Alaska Department of Health and Social Services (DHSS)**

DHSS is now leading the State of Alaska COVID-19 Recovery through Department Operations, supported by SEOC and other state departments as required.

For current COVID-19 information, see:

<https://covid19.alaska.gov/>

<https://www.cdc.gov/coronavirus/2019-ncov/index.html>

**NTAS BULLETIN**

To read current or expired advisories, click the link below:

<https://www.dhs.gov/national-terrorism-advisory-system>

**Travel Alerts and Conditions**

For current driving conditions dial 511 or link to <http://511.alaska.gov/>

**Barry Arm Landslide / Tsunami Risk**

For the latest information on the Barry Arm Landslide and Tsunami risk, click here:

[DGGs Barry Arm Landslide and Tsunami Hazard](#)

**Recent Earthquakes**

USGS Earthquake Information: <http://earthquake.usgs.gov/>

National Tsunami Warning Center: <http://tsunami.gov/>

## Alaska Volcanoes

**Davidof** Alert Level: **Advisory** and Aviation Color Code: **Yellow**

**Great Sitkin** Alert Level: **Watch** and Aviation Color Code: **Orange**

**Pavlof** Alert Level: **Watch** and Aviation Color Code: **Orange**

**Semisopchnoi** Alert Level: **Watch** and Aviation Color Code: **Orange**

For Alaska Volcano updates, go to: <https://www.avo.alaska.edu/>

## Air Quality Index (AQI) Advisories

For the most up to date Air Quality Index Advisories:

<http://dec.alaska.gov/Applications/Air/airtoolsweb/Home/Index>

## Spills of Oil and Hazardous Substances

The ADEC Spill Prevention and Response page is located at:

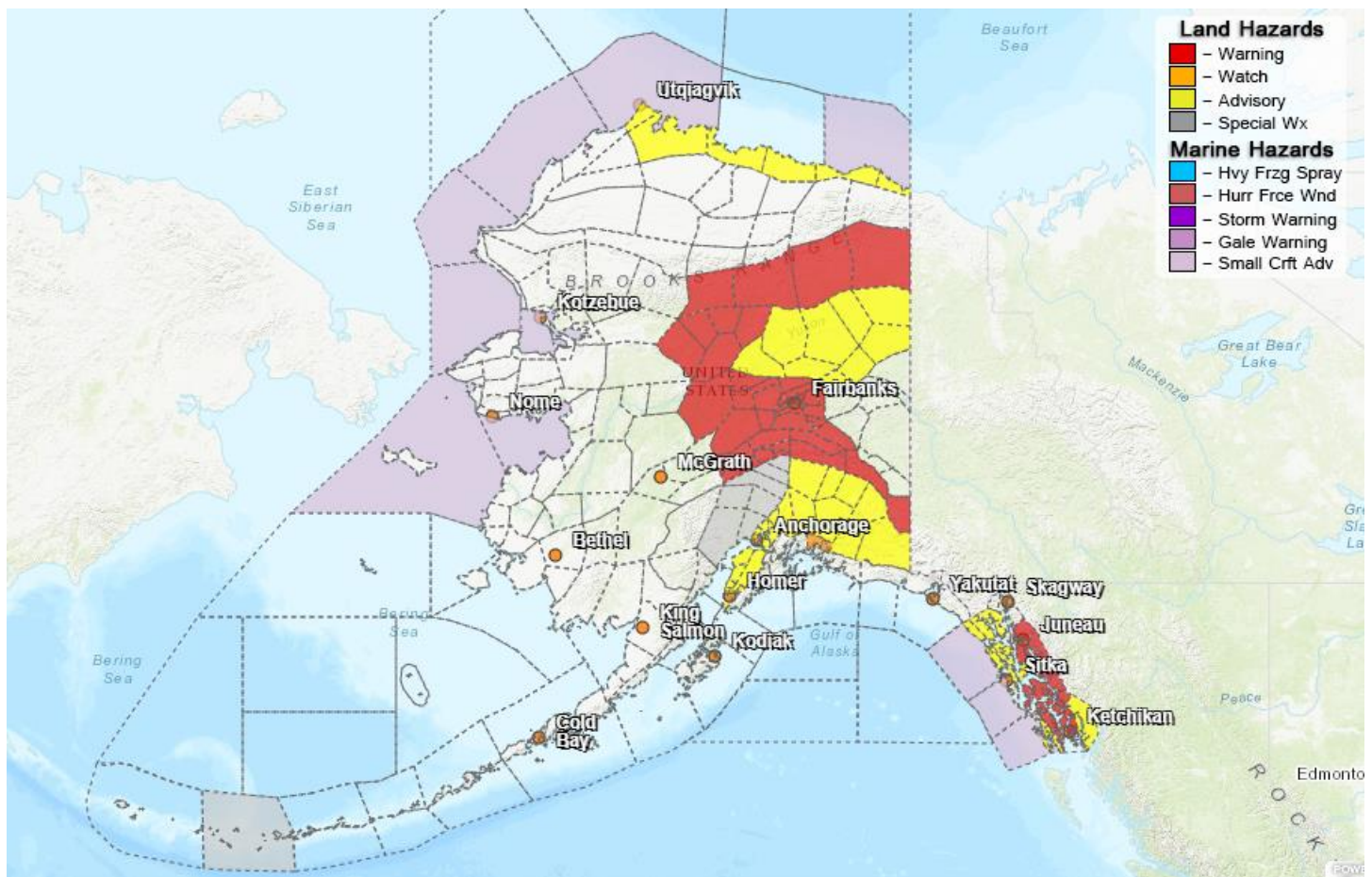
<http://dec.alaska.gov/spar/ppr/spill-information/response/>

## Alaska Cyber Security Information

State Employees may sign up for cyber security notifications and alerts at

<https://oit.alaska.gov/security>

## Significant Weather:



Winter Storm Warnings are in effect for the following areas:

- Southeastern Brooks Range and the Upper Koyukuk Valley until noon today. 1 to 4 inches of snow.

- Central Interior, Middle Tanana Valley, Deltana and Tanana Flats, Denali and the Eastern Alaska Range until 6:00 A.M. tomorrow.
- Juneau from 6:00 P.M. today until noon tomorrow. 5 to 7 inches of snow.
- Coffman Cove, Petersburg, Whale Pass and Wrangell from 7:00 P.M. today until 7:00 P.M. tomorrow. 4 to 12 inches of snow.
- Kasaan, Ketchikan and Thorne Bay from 9:00 P.M. today until 9:00 P.M. tomorrow. 4 to 10 inches of snow.

A Winter Storm Watch has been issued for Thompson Pass from late tonight until tomorrow afternoon. Up to 1 inch of snow accumulation and high winds are expected up to 70mph.

Winter Weather Advisories are in effect for the following areas:

- Northern Arctic Coast and the Central and Eastern Beaufort Sea Coast until 3:00 P.M. today. 1 to 2 inches of snow.
- Yukon Flats and the Steese Highway until 6:00 A.M. tomorrow. 2 to 4 inches of snow.
- Elfin Cove, Gustavus, Hoonah, Pelican and Tenakee Springs from 6:00 P.M. today until noon tomorrow. 4 to 6 inches of snow.
- Angoon from 7:00 P.M. today until 4:00 P.M. tomorrow. 3 to 5 inches of snow.
- Klawock and Hyder from 9:00 P.M. today until 9:00 P.M. tomorrow. 2 to 7 inches of snow.
- Western Kenai Peninsula until 9:00 P.M. today. 1 to 4 inches of snow and light accumulations of ice is possible.
- Anchorage and the Matanuska Valley until 1:00 A.M. tomorrow. 5 to 10 inches of snow.
- Copper River Basin from 1:00 P.M. today until 3:00 A.M. tomorrow. 4 to 8 inches of snow.

A Special Weather Statement has been issued for the Susitna Valley. A winter storm is expected to impact the valley Monday. Up to 5 inches of snow is possible along the Parks Highway from Willow north to Talkeetna.

For more information and the most current weather, Watches / Warnings / Advisories go to: <http://www.weather.gov/arh>

### **Avalanche Forecast:**



There are areas near Valdez, the Richardson Highway, Cordova, Chilkat Lake and Haines with moderate risk.

Check the Avalanche Forecast Center closest to your area for the most up to date information on avalanche potential. <https://alaskasnow.org> or <https://www.weather.gov/afc/avalancheweather>

**The Next Situation Report:** will be 21 December 2021. A significant change in the situation or the threat level will prompt an interim report.

This report is posted on the internet at <https://ready.alaska.gov/sitrep>. To register for email distribution, go to <http://list.state.ak.us/mailman/listinfo/dhsem.situation.report>. Direct questions regarding this report to the SEOC at 907-428-7100 or [seoc@alaska.gov](mailto:seoc@alaska.gov)